

**NEXT DAY
DELIVERY!**



Ultra Precision Collet Chucks

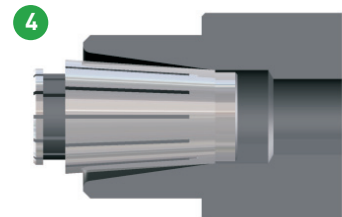
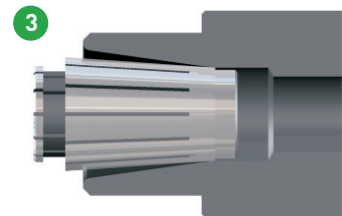
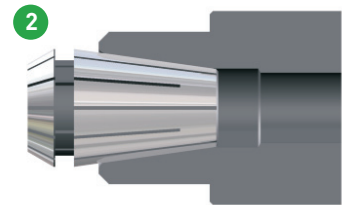
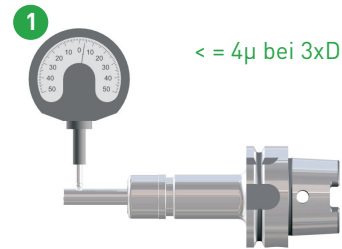
MADE IN GERMANY

Stockists of the UK's
most comprehensive
range of solid carbide
 μ cutting solutions

01484 665 489 | info@fullerton-uk.com
01484 660 626 | www.fullerton-uk.com

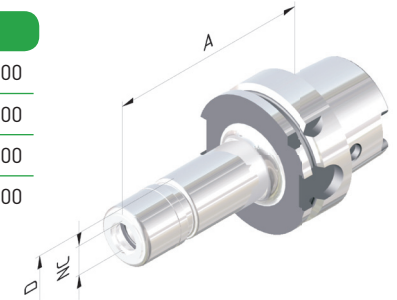
Quality Features: Type NC

- High radial rigidity as a result of the larger thickness in front part of inner taper (PIC.2)
- Less Vibration and therefore better surfaces, due to more contact between collet and chuck (PIC. 3 & 4)
- Highest runout accuracy due to slim taper angle (PIC. 1) and 90° clamping shoulder (PIC. 2)
- Better coolant supply as a result of the completely smooth surface of the clamping nut.



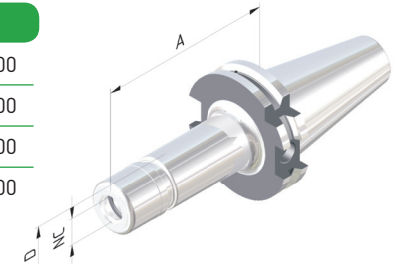
Collet Chuck HSK - A63, type NC

CODE	HSK	NC	DIAMETER	A	D	£
606342-02	63	10	3-10	75	28	105.00
606342-03	63	16	3-16	75	40	110.00
606342-22	63	10	3-10	100	28	112.00
606342-23	63	16	3-16	100	40	117.00



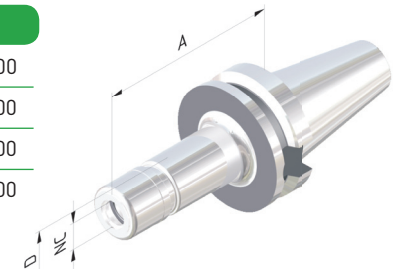
Collet Chuck Din 69871 SK40 ADB, type NC

CODE	SK	NC	DIAMETER	A	D	£
714042-02	40	10	3-10	70	28	79.00
714042-03	40	16	3-16	70	40	83.00
714042-22	40	10	3-10	100	28	85.00
714042-23	40	16	3-16	100	40	89.00



Collet Chuck MAS-BT40, type NC

CODE	BT	NC	DIAMETER	A	D	£
754042-02	40	10	3-10	70	28	79.00
754042-03	40	16	3-16	70	40	83.00
754042-22	40	10	3-10	100	28	85.00
754042-23	40	16	3-16	100	40	89.00



Ultra Precision Collets NC10

CODE	DIAMETER	£
127-003	3	30.00
127-004	4	30.00
127-005	5	30.00
127-006	6	24.00
127-008	8	24.00
127-010	10	24.00



Wrench



CODE	TYPE	£
162-51	NC10	60.00
162-52	NC16	67.00

Ultra Precision Collets NC16

CODE	DIAMETER	£
127-103	3	38.00
127-104	4	38.00
127-105	5	38.00
127-106	6	31.00
127-108	8	31.00
127-110	10	31.00
127-112	12	31.00
127-114	14	31.00
127-116	16	31.00



Collet Assembly Aid



CODE	TYPE	£
162-511	NC10	22.00
162-521	NC16	25.00

Replacement Clamping Nut



CODE	TYPE	£
107-75	NC10	22.00
107-76	NC16	25.00